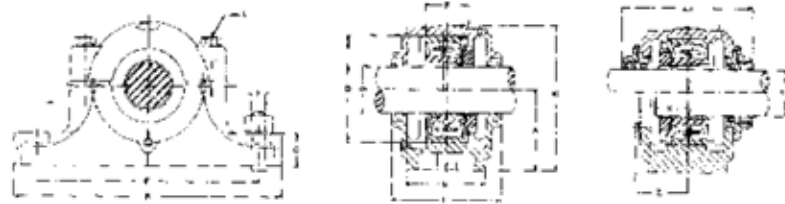


Shaft Diameter (mm)	UNIT Number	Dimensions (mm)										Weight kg
		L	A	J	H1	H	N	N1	H2	B1		
20	UKP2 5+H2305X	140	38	105	16	36.5	13	19	70	35	0.87	
25	UKP2 6+H2306X	165	48	121	18	42.9	17	21	83	38	1.44	
30	UKP2 7+H2307X	167	48	127	19	47.6	17	21	94	43	1.78	
35	UKP2 8+H2308X	184	54	137	19	49.2	17	23	100	46	2.20	
40	UKP2 9+H2309X	190	54	146	20	54.0	17	23	108	50	2.40	
45	UKP2 0+H2310X	206	60	159	22	57.2	20	25	114	55	2.90	
50	UKP2 1+H2311X	219	60	171	22	63.5	20	25	126	59	3.50	
55	UKP2 2+H2312X	241	70	184	25	69.8	20	25	138	62	4.80	
60	UKP2 3+H2313X	265	70	203	27	76.2	25	29	150	65	5.70	
65	UKP2 5+H2315X	275	74	217	28	82.6	25	31	163	73	7.50	
70	UKP2 6+H2316X	292	78	232	28	88.9	25	31	175	78	9.44	
75	UKP2 7+H2317X	310	83	247	28	95.2	25	31	187	82	11.55	
80	UKP2 8+H2318X	327	88	262	30	101.6	27	33	200	86	13.37	

135

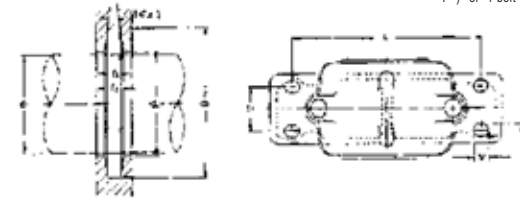
SN - SSN 500 Series



HOUSING NO.	NORMAL DIMENSIONS (mm)															
	SHAFT DIA. D1		D H8	B	b	G	F H13	A h13	L	H	E	E1	L1	X	Z	D2H12
	mm	in														
SN 505	20	3/4	52	165	46	22	25	40	67	75	130	25	-	22	-	21.5
SN 506	25	1	62	185	52	22	30	50	77	90	150	25	-	22	-	26.5
SN 507	30	1 1/8	72	185	52	22	33	50	82	95	150	25	-	24	-	31.5
SN 508	35	1 1/4	80	205	60	25	33	60	85	110	170	30	-	26	-	36.5
SN SSN 509	40	1 1/2	85	205	60	25	31	60	85	112	170	30	-	28	-	41.5
SN SSN 510	45	1 3/4	90	205	60	25	33	60	90	115	170	30	-	28	-	46.5
SN SSN 511	50	2	100	255	70	28	33	70	95	130	210	35	160	30	54	51.5
SN SSN 512	55	2 1/8	110	255	70	30	38	70	105	135	210	35	172	32	62	56.5
SN SSN 513	60	2 1/4	120	275	80	30	43	80	110	150	230	40	172	36	62	62
SN SSN 515	65	2 1/2	130	280	80	30	41	80	115	155	230	40	182	38	68	67
SN SSN 516	70	2 3/4	140	315	90	32	43	95	120	175	260	50	184	40	68	72
SN SSN 517	75	3	150	320	90	32	46	95	125	185	260	50	184	42	70	77
SN SSN 518	80	3 1/4	160	345	100	35	52.4	100	145	195	290	50	204	50	81	82
SN SSN 519	85	-	170	345	100	35	53	112	140	210	290	50	-	-	-	87
SN SSN 520	90	3 1/2	180	380	110	40	70.3	112	160	218	320	60	224	54	90	92
SN SSN 522	100	4	200	410	120	45	80	125	175	240	350	70	232	60	92	102
SN SSN 524	110	4 1/4	215	410	120	45	86	140	185	270	350	70	248	64	95	113
SN SSN 526	115	4 1/2	230	445	130	50	90	150	190	290	380	70	268	64	100	118
SN SSN 528	125	5	250	500	150	50	98	150	205	305	420	80	286	70	108	128
SN SSN 530	135	5 1/4	270	530	160	60	106	160	220	325	450	90	304	76	113	138
SN SSN 532	140	5 1/2	290	550	160	60	114	170	235	345	470	90	320	80	122	143

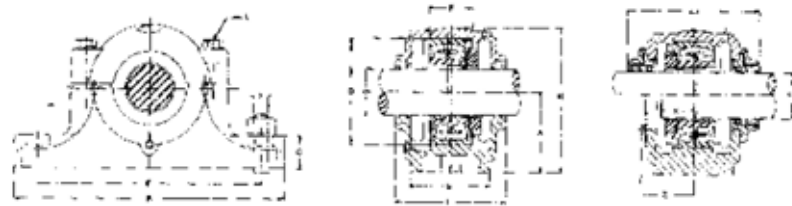
SN - SSN 500 Series

NOTES:
Foot of standard housing SSN type is solid without mounting holes or can be precast as 2-bolt (with prefix T) or 4-bolt mounting holes (with prefix F).



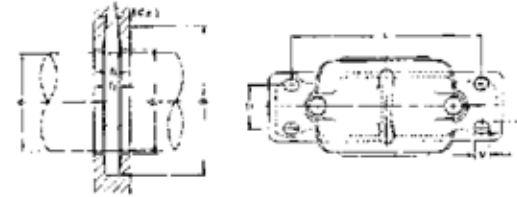
d3 H12	t	f1 H13	f2	u	v	S		WEIGHT kg		BEARING NO.		ADAPTER SLEEVES		LOCATING RING	
						2 bolts	4 bolts	SN5	SSN5	SELF-ALIGN BALL	SPHERICAL ROLLER	METRIC	INCH	NUMBER	QTY
31	M8	3	4.2	15	20	M12	M8	1.5	2.3	1205K 2205K	- 22205K	H205 HE305	HE205 HE305	52x5 52x7	2 1
38	M8	4	5.4	15	20	M12	M10	1.74	2.8	1206K 2206K	- 22206K	H206 HE306	HE206 HE306	62x7 62x10	2 1
43	M10	4	5.4	15	20	M12	M10	1.9	3.2	1207K 2207K	- 22207K	H207 HE307	HE207 HE307	72x8 72x10	2 1
48	M10	4	5.4	15	20	M12	M10	2.63	3.2	1208K 2208K	- 22208K	H208 HE308	HE208 HE308	80x7.5 80x10	2 1
53	M10	4	5.4	15	20	M12	M10	2.64	3.7	1209K 2209K	- 22209K	H209 HE309	HE209 HE309	85x6 85x8	2 1
58	M10	4	5.4	15	20	M12	M10	2.8	3.8	1210K 2210K	- 22210K	H210 HE310	HE210 HE310	90x6.5 90x10	2 1
67	M12	5	6.9	18	23	M16	M12	4.32	6.2	1211K 2211K	- 22211K	H211 HE311	HE211 HE311	100x6 100x8	2 1
72	M12	5	6.9	18	23	M16	M12	4.99	6.5	1212K 2212K	- 22212K	H212 HE312	HE212 HE312	110x8 110x10	2 1
77	M12	5	6.8	18	23	M16	M12	5.64	8.3	1213K 2213K	- 22213K	H213 HE313	HE213 HE313	120x10 120x12	2 1
82	M12	5	6.8	18	23	M16	M12	6.19	9.0	1215K 2215K	- 22215K	H215 HE315	HE215 HE315	130x8 130x10	2 1
89	M16	6	8.1	22	27	M20	M12	8.17	12.1	1216K 2216K	- 22216K	H216 HE316	HE216 HE316	140x8.5 140x10	2 1
94	M16	6	8.1	22	27	M20	M12	9.37	12.2	1217K 2217K	- 22217K	H217 HE317	HE217 HE317	150x9 150x10	2 1
99	M16	6	8.1	22	27	M20	M16	11.5	15.2	1218K 2218K	- 22218K	H218 HE318 H2318	HE218 HE318 HE2318	160x16.2 160x11.2 160x10	2 2 1
104	M16	6	8.1	22	28	M20	M16	13.5	17.7	1219K 2219K	- 22219K	H219 HE319	HE219 HE319	170x10.5 170x10	2 1
111	M20	7	9.3	26	32	M24	M16	16.3	20.5	2220K 2320K	- 22220K	H320 HE2320	HE320 HE2320	180x12.1 180x10	2 1
125	M20	8	10.8	26	32	M24	M16	25.1	29.2	2222K 2322K	- 22222K	H322 HE2322	HE322 HE2322	200x13.5 200x10	2 1
135	M20	8	10.7	26	34	M24	M16	27.2	33	2224K 2324K	- 22224K	H3124 HE2324	HE3124 HE2324	215x14 215x10	2 1
140	M24	8	10.7	28	35	M24	M20	35.2	40.9	2226K 2326K	- 22226K	H3126 HE2326	HE3126 HE2326	230x13 230x10	2 1
154	M24	9	12.2	34	44	M30	M24	43.7	48.6	-	-	H3128 HE2328	HE3128 HE2328	250x15 250x10	2 1
164	M24	9	12.2	34	42	M30	M24	45.3	56.2	-	-	H3130 HE2330	HE3130 HE2330	270x16.5 270x10	2 1
173	M24	10	13.7	32	44	M30	M24	50.75	68.5	-	-	H3132 HE2332	HE3132 HE2332	290x17 290x10	2 1

SN - SSN 600 Series



HOUSING NO.	NORMAL DIMENSIONS (mm)															
	SHAFT DIA. D1		D H8	B	b	G	F H13	A h13	L	H	E	E1	L1	X	d2H12 METRIC	d3 H12
	mm	in														
SN 605	20	3/4	62	185	52	22	34	50	80	90	150	25	-	27	21.5	31
SN 606	25	1	72	185	52	22	37	50	82	95	150	25	-	27	26.5	38
SN 607	30	1 1/8	80	205	60	25	41	60	90	110	170	30	-	32	31.5	43
SN 608	35	1 1/4	90	205	60	25	43	60	95	115	170	30	-	34	36.5	48
SN SSN 609	40	1 1/2	100	255	70	28	46	70	105	130	210	35	-	36	41.5	53
SN SSN 610	45	1 3/4	110	255	70	30	50	70	115	135	210	35	-	39	46.5	58
SN SSN 611	50	2	120	275	80	30	53	80	120	150	230	40	185	40	51.5	67
SN SSN 612	55	2 1/8	130	280	80	30	56	80	125	155	230	40	185	44	56.5	72
SN SSN 613	60	2 1/4	140	315	90	32	58	95	130	175	260	50	200	46	62	77
SN SSN 615	65	2 1/2	160	345	100	35	65	100	140	195	290	50	210	51	67	82
SN SSN 616	70	2 3/4	170	345	100	35	68	112	145	212	290	50	210	52	72	89
SN SSN 617	75	3	180	380	110	40	70	112	155	218	320	60	220	56	77	94
SN SSN 618	80	3 1/4	190	400	110	33	74	112	160	230	335	60	225	58	82	99
SN SSN 619	85		200	420	120	36	77	125	170	245	350	70	235	60	87	104
SN SSN 620	90	3 1/2	215	420	120	38	83	140	175	280	350	70	240	64	92	111
SN SSN 622	100	4	240	460	130	40	90	150	190	300	390	70	258	69	102	125
SN SSN 624	110	4 1/4	260	540	160	50	96	160	205	325	450	90	280	73	113	135
SN SSN 626	115	4 1/2	280	560	160	50	103	170	215	350	470	90	300	77	118	140
SN SSN 628	125	5	300	630	170	55	112	180	235	375	520	90	320	83	128	154
SN SSN 630	135	5 1/4	320	680	180	55	118	190	245	395	560	90	340	88	138	164
SN SSN 632	140	5 1/2	340	710	190	60	124	200	255	415	580	100	350	93	143	173

SN - SSN 600 Series



NOTES:

Foot of standard housing SSN type is solid without mounting holes or can be precast as 2-bolt (with prefix T) or 4-bolt mounting holes (with prefix F).

T	f1 H13	f2	u	v	S		WEIGHT kg		BEARING NO.		ADAPTER SLEEVE		LOCATING RING	
					2 bolts	4 bolts	SN6	SSN6	SELF-ALIGN BALL	SPHERICAL ROLLER	METRIC	INCH	NUMBER	QTY
M8	3	4.2	16	20	M12	M10	2.11	-	1305K 2305K	-	H305 H2305	HE305 HE2305	62x8.5 62x10	2 1
M10	4	5.4	16	20	M12	M10	2.09	-	1306K 2306K	-	H306 H2306	HE306 HE2306	72x9 72x10	2 1
M10	4	5.4	16	20	M12	M10	3.4	4.1	1307K 2307K	-	H307 H2307	HE307 HE2307	80x10 80x10	2 1
M10	4	5.4	15	24	M12	M10	3.6	4.7	1308K 2308K	21308K	H308 H2308	HE308 HE2308	90x10 90x10	2 1
M12	4	5.4	19	25	M16	M12	5.3	6.8	1309K 2309K	21309K	H309 H2309	HE309 HE2309	100x10.5 100x10	2 1
M12	4	5.4	18	23	M16	M12	5.5	6.8	1310K 2310K	21310K	H310 H2310	HE310 HE2310	110x11.5 110x10	2 1
M12	5	6.9	20	28	M16	M12	6.9	9.0	1311K 2311K	21311K	H311 H2311	HE311 HE2311	120x12 120x10	2 1
M12	5	6.9	20	28	M16	M12	8.8	10.5	1312K 2312K	21312K	H312 H2312	HE312 HE2312	130x12.5 130x10	2 1
M16	5	6.8	22	30	M20	M12	9.8	12.4	1313K 2313K	21313K	H313 H2313	HE313 HE2313	140x12.5 140x10	2 1
M16	5	6.8	23	28	M20	M16	13.0	16.4	1315K 2315K	21315K	H315 H2315	HE315 HE2315	160x14 160x10	2 1
M16	6	8.1	23	30	M20	M16	15.5	19.7	1316K 2316K	21316K	H316 H2316	HE316 HE2316	170x14.5 170x10	2 1
M20	6	8.1	26	35	M24	M16	16.3	20.7	1317K 2317K	21317K	H317 H2317	HE317 HE2317	180x14.5 180x10	2 1
M20	6	8.1	27	38	M24	M16	20.0	24	1318K 2318K	-	H318 H2318	HE318 HE2318	190x15.5 190x10	2 1
M20	6	8.1	28	36	M24	M16	28.0	29.7	1319K 2319K	-	H319 H2319	HE319 HE2319	200x16 200x10	2 1
M20	7	9.3	27	33	M24	M16	30.5	37.1	1320K 2320K	-	H320 H2320	HE320 HE2320	215x18 215x10	2 1
M20	8	10.0	28	32	M24	M16	42	49.2	1322K 2322K	-	H322 H2322	HE322 HE2322	240x20 240x10	2 1
M24	8	10.7	34	42	M30	M20	59	72	-	22324K	H2324	HE2324	260x10	1
M24	8	10.7	34	42	M30	M20	61.5	80.9	-	22326K	H2326	HE2326	280x10	1
M30	9	12.2	34	46	M30	M20	88	105	-	22328K	H2328	HE2328	300x10	1
M30	9	12.2	38	44	M30	M20	89	115	-	22330K	H2330	HE2330	320x10	1
M30	10	13.7	40	52	M36	M24	127	145	-	22332K	H2332	HE2332	340x10	1